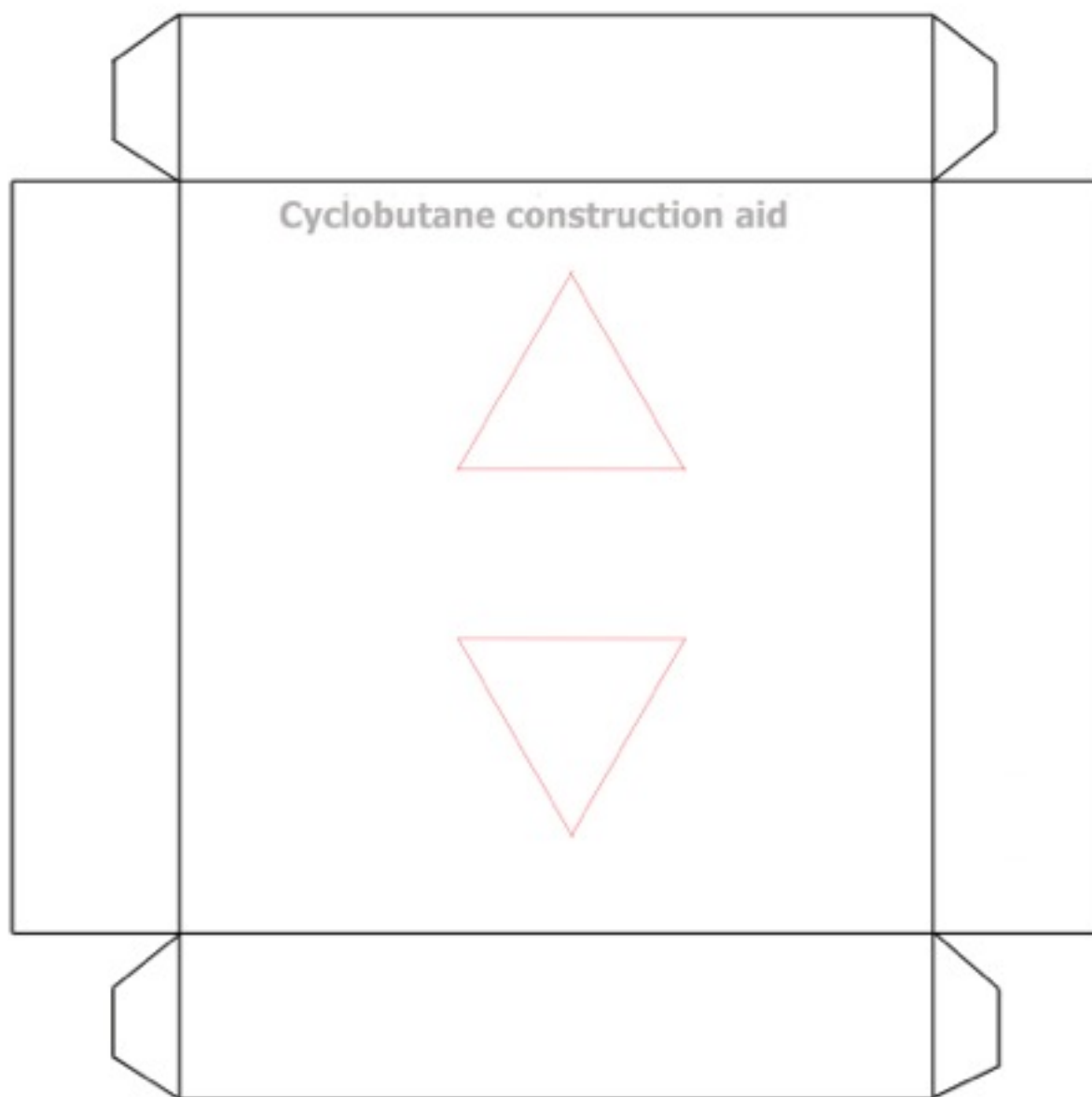


Use a craft knife to remove the two small triangles. Drop single bond carbons in the holes and place the two additional carbons flat on the box to complete the ring of four.



When the carbons are in place with a square void in the centre of the ring add a small drop of glue on the inner corner of each open junction. Allow to dry. Remove the ring. Fill the open junctions with a small wedge of white polystyrene to represent the stressed bonds or partly fill with glue.

The construction aid is more durable if printed on heavy copy paper or backed inside the top after printing with light card, but we find regular copy paper to be satisfactory (with care) and we replace it as needed.